

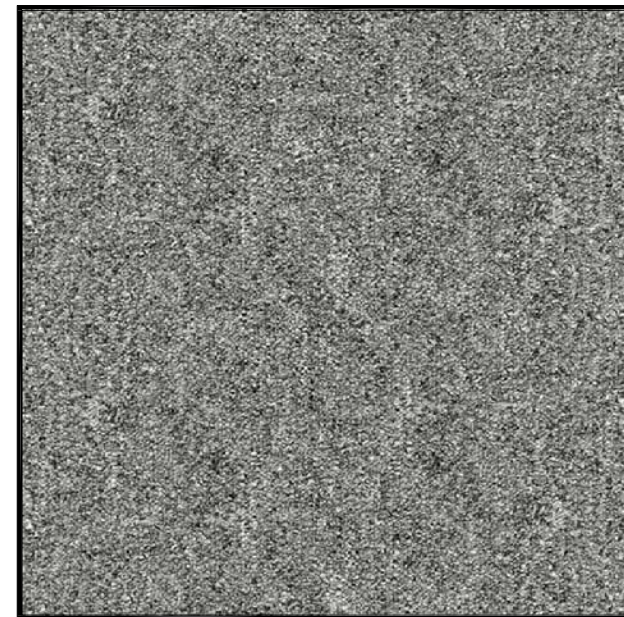
Product Data Sheet

GR112 Carpet Panel Performance Data Sheet On 10 and 40 Series Understructure

3.00	Model Number	GR112 on 10 Series Pedestal Only Understructure		GR112 on 40 Series Understructure	
		USCS	SI	USCS	SI
3.10	Maximum Rolling Load With 10 Series Understructure, #:				
3.11	Wheel 1: 10 Passes	600 lbs	2.67 kN	800 lbs	3.56 kN
3.12	Wheel 2: 10000 Passes	600 lbs	2.67 kN	800 lbs	3.56 kN
3.13	Max. Rolling Load Permanent Set, in., Wheel 1:	0 in	0.00 mm	0 in	0.00 mm
3.14	(Note 1)	10 Passes	0.010 in	0.24 mm	0.010 in
3.15	Max. Rolling Load Permanent Set	Wheel 2: Start	0 in	0.00 mm	0 in
3.16	(Note 2)	500 Passes	0.014 in	0.34 mm	0.014 in
3.17		5000 Passes	0.018 in	0.44 mm	0.018 in
3.18		10000 Passes	0.020 in	0.49 mm	0.020 in
3.19	Design Concentrated Load, 1" X 1" (2.54cm x 2.54cm) Block	1250 lbs	5.56 kN	1250 lbs	5.56 kN
3.20	Ultimate Concentrated Load	2916 lbs	12.97 kN	2916 lbs	12.97 kN
3.21	Design Uniform Load	300 lbs/ft ²	12.40 kN/m ²	300 lbs/ft ²	12.40 kN/m ²
3.22	Ultimate Uniform Load	900 lbs/ft ²	37.19 kN/m ²	900 lbs/ft ²	37.19 kN/m ²
3.23	Maximum Drop Height for Impact, in.: Body 1 (Note 3)	144 lbs	0.64 kN	144 lbs	0.64 kN
3.24	Maximum Drop Height for Impact, in.: Body 2 (Note 4)	84 lbs	0.37 kN	84 lbs	0.37 kN
3.25	Materials of Construction - Shell	Galvanized Steel			
3.26	Materials of Construction - Core	Resin Fiber			
3.27	Painted Parts	None			
3.28	Ease of Access to Subfloor	High			
3.29	Ease of Field Cutting and Sawing	Easy			
3.30	Nonmagnetic (Nonferrous)	No			
3.31	Fuel Contribution Factor per ASTM E-84-84	5			
3.32	Flame Spread per ASTM E-84-84	5			
3.33	Smoke Density Factor per ASTM E-84-84	0			
3.34	Static Dissipation	Excellent			
3.35	Carpet Static	AATCC-134 Under 3.5KV			
3.36	Carpet Flammability	ASTM E 648 Class 1			
3.37	Carpet Smoke Density	ASTM E 662 Less than 450			
3.38	Thermal Conductivity	1.2 BTU/hr x ft ² x °F		6.80832 Watt/m ² x Kelvin	
3.39	Max. Ohms (DC) Between Uncovered Surface and Bottom Pan	1			
3.40	Air Leakage at 5" s.w.g. (124.5 Pa) Volume/ Panel Joint Distance	0.05 ft ³ /ft		0.0046 m ³ /m	
3.41	Resistance to Oxidization in High Humidity	Fair			
3.42	Resistance to Acids and Polar Solvents	Poor			
3.43	Resistance to Organic (Nonpolar) Solvents	Fair			
3.44	Suitable Covering Material	All			
3.45	Weight	7.5 lbs/ft ²		36.62 kg/m ²	
3.46	Overall Dimensions Less Covering Material, L" X W"	24in x 24in		60.96cm x 60.96cm	
3.47	Depth at Edge Less Covering Material, in.	1.07 in		27.18 mm	
3.48	Warranty	1 Year			
3.49	Approximate Delivery	3 Weeks			
3.50		<3000 Ft ² (300m ²)			
3.51		>3000 Ft ² (300m ²)			5 Weeks

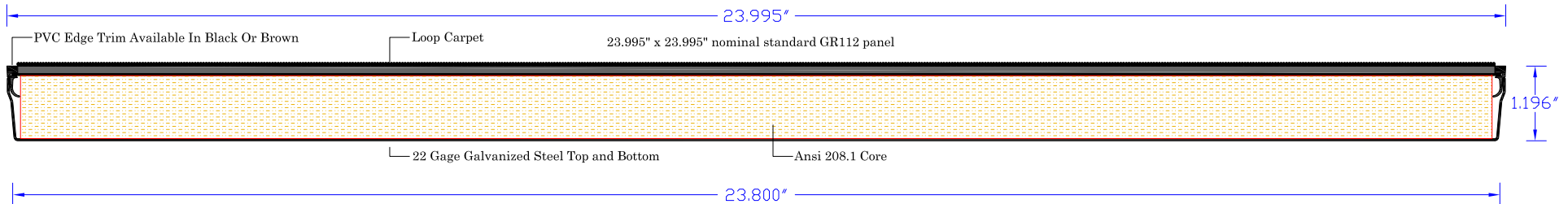
Notes:

1. Wheel 1: 3" dia. x 1-13/16" wide
2. Wheel 2: 6" dia. x 1-1/2" wide
3. Body 1: 2" dia. steel indenter, 10 lbs.
4. Body 2: 12" dia. soft bag, 90 lbs.
5. Panels and understructure can be custom designed to meet the requirements of any application.
6. All values given are for panels less covering material.



23.995"

PVC Edge Trim available in Black or Brown



JOB: Typical	REVISED BY:	DATE:	DESCRIPTION:
CEI PART #: GR112 CPT			
DRAWN BY: M.C.			
PAPER SIZE = 8.5" x 11" LASER			
SHEET: 1 of 1	SCALE: 2.5 = 1	DATE: 15 MAR 2016	
PATH=C:\documents and settings\authorized user\desktop\autocad drawings\carpet product data sheet.dwg			



Computer Environments Inc.
 1616 JOHN WEST ROAD DALLAS, TX USA 75228 214 321 1234 FAX 214 321 2333 ceifloor.com
 Manufactured in the U.S.A.

PART OR PROJECT DESCRIPTION Standard Panel Section With Factory Applied Carpet